



Great Swamp Watershed Association

Meeting of the Board of Trustees

May 19, 2023

8:00 a.m. – in person

Agenda

- Approval of Board Minutes from 3/24/2023 Meeting
- Election of new board member: Charlie Apt
- Potential election of: Michael Lattmann, Adam Psichos, Carolyn Dempsey
- Finance Report
- Strategic plan review organizational growth pillar
- Gala 2023 discussion
- Executive Director Report
- Land Trust Accreditation update
- Development Report
- Other Business
- Next meeting dates: June 19 8AM in person budget review and approval.
- Adjourn

Upcoming events:

June 13 Advisory Council dinner

June 25 music festival

October 26 gala

New board member proposals:

Charlie Apt

Charlie and his wife Kathleen Apt attended our gala in 2022 and have expressed interest in getting involved with a local environmental organization. Charlie is the former President of Ciao Bella Gelato and the current CEO of Sarabeth's in New York. He and his wife recently moved from Bernardsville to Morris Township. Charlie and Kathleen are one of our sponsors for this year's music festival!

Michael Lattmann

Michael and his wife Susie are residents of Basking Ridge where Michael grew up. He is the owner and broker of record at Kienlen Lattmann Sotheby's International Realty. Their real estate offices are in Bedminster, Bernards Township, Mendham, Morristown, and Madison. Michael comes from Arthur Anderson before going into the real estate world.

Adam Psichos

Adam and his wife, Clelia Biamonti, recently moved from Summit to Far Hills. Adam is the Director of Strategic Initiatives at Glenmede Investment and Wealth Management Office in Morristown. He was recently the chairperson of Sage Eldercare in Summit and continues to serve on their board of trustees. Adam has been serving on our Advisory Council. Adam's wife, Clelia, is the Executive Director of the Overlook Foundation.

Carolyn Dempsey

Carolyn and her husband, Brian, live in Chatham Borough. Carolyn serves on the Chatham Borough Council. She is originally from Nebraska and is a music teacher. They have lived in Chatham for over 20 years and are actively involved in the community.

GSWA Board of Trustees Meeting
03.24.2023

Sally Rubin convened the meeting at 8:07 a.m., both in-person and via Zoom. Board members in attendance were Stacey Valentine, Ralph Jones, Tony DellaPelle, Todd Hyde, Dot Stillinger, Jordan Glatt, Michael Dee, Marilyn Dee, David Naidu, Clark Wagner, Brett Williamson, Kate Barry, Lisa Stevens, and Meisha Williams Bertels. Advisory Council members included Thelma Achenbach and Fred Castenschiold. Staff members present were Sue Levine, Sally Rubin, Sandra LaVigne and Wade Kirby.

Tony DellaPelle motioned for the approval of the January 20, 2023 Board Meeting Minutes which was seconded by Michael Dee. All in favor. None opposed. The motion carried.

Lydia Chambers and Sue Kessel were then proposed as new board members. Sally gave the background on each candidate; both of whom have been very helpful at events and are well known by the staff. Sue Kessel's business Chatham Print and Design performs all of GSWA's printing needs, and Lydia Chambers has been invaluable with the **Native Plant Sale** for the past two years. *Michael then motioned for the approval of Sue and Lydia to join the board which was seconded by Todd Hyde. All in favor. None opposed. The motion carried.* Sue and Lydia then joined the meeting.

Tony suggested a Trusteeship Committee Meeting be held in late April or early May to examine additional board member candidates.

Sue Levine then delivered her Finance Report. For the February YTD results, revenue came in at \$819,610 which is slightly above Budget thanks to the funds from Sblendorio for the easement costs including easement management. Government Grants are in/out so that shortfall is not a net event. All other revenue sources are tracking well. Expenses came in at \$649,824 which are below due to a mixture of items including lower than budgeted Advocacy, Gala expenditures and personnel costs. This results in a Net Ordinary Income of \$169,786 which is \$60k above budget for February YTD. As of February month end, the Investment portfolio was at \$1,698,129. We postponed the investment presentation until Clark could be present to review with the board. Many thanks to Clark for his analysis. The Balance sheet reflects cash on hand of \$512,090 at a mixture of banks. We were over the FDIC limits at month end by \$12,000. Those funds have been moved to remain FDIC insured. We will continue to monitor the balances to be at or below FDIC limits. By fiscal year end, we will add the Right of Use Asset for leases for the office space as well as the Lease Liability. This is a FASB requirement that must be implemented by year end. The two largely offset one another on the balance sheet.

Clark Wagner then delivered a presentation on the endowment funds which included slides. Sue clarified that the endowment funds are board designated but treated like an endowment. Todd asked about investing in commodities and Clark responded that that would be difficult given the size of the portfolio. Sue added that we are seeking a balance with ESG funds. The Finance Committee will analyze and make a proposal to the board regarding ESG future investing.

We then reviewed the water component of our strategic plan. Sandra LaVigne spoke about the ongoing expansion downstream that has added four additional sampling sites. GSWA performs water quality sampling four times per year. We will also test for additional chemicals. The PFAS sampling is

completed. Very strategic sampling sites were selected. A three year state of the streams analysis is happening now. There has been both a rainfall and drought impact on the streams. GSWA and the Long Hill Library have partnered for hosting both a scavenger hunt and stream assessment training. Restoration work is ongoing through grant opportunities. There is a Summit stream clean-up working with the community and additional receptacles will be sought for trash disposal. We will continue to have updates on the strategic plan at future board meetings.

Sally then segued to a discussion about the Fall Gala. Deb Gottsleben (Jay DeLaney's widow) agreed to allow us to honor Jay at the Gala this year, In Memoriam. Jordan Glatt will contact Senator Cory Booker as an additional honoree, although it is difficult to get his commitment this early. Anthony Sblendorio is another possible honoree given the easement on his land trusted to GSWA. Jordan could also ask the Governor. The tentative date at Brooklake Country Club in Florham Park is Thursday, October 5th, 2023. Sally will check on alternate date options at Brooklake.

Sally spoke about the amount of time spent on the NJDEP issue regarding the proposed 96-unit residential construction project on Route 202/Mt. Kemble Avenue. She strongly encouraged board members to submit comments in opposition TODAY as Friday, March 24th is the deadline. The NJDEP is required to read and respond to all the comments. There could be a long delay before they will make a decision *which is good for us!* This is the first in a series of permits that the developer has to get. The sewer service area map must get changed before they can address any other permits. Only 16 of the 96 units are for affordable housing, and affordable housing does not trump the NJDEP or the Clean Water Act.

Sally then announced the hiring of the new Office Manager, Melanie Hertgen as of February 1st. Sally would like to increase Melenie's hours to a full-time position next fiscal year and have her do some programming.

The land trust accreditation has been received conditionally. There are some issues with the LaMorgese Property that need to be resolved.

Jim Weichert has two and a half acres that he would like to donate to GSWA. Gerry-Jo Cranmer said that the building restrictions in Harding are substantial and she will gladly walk the property. Michael Dee cautioned to beware of Jim Weichert's ulterior motives. The Refuge might be interested in ultimate ownership since it is within their acquisition area.

Application may be made for an EPA Environmental Justice Grant over three years for up to \$500,000.

The music festival will be on Sunday, June 25th, 2023 at Brook Valley Farm - 336 Loantaka Way Madison. This is Nic Platt's mother's property. *We need help from board members to solicit sponsors and volunteer!*

At the board meeting on Monday, June 19th the 2023-2024 fiscal year budget will need to be approved.

Sally believes that traction on acquiring the Ferber Property may be imminent! There are meetings planned regarding the logistics for our acquisition.

Sally asked for the submission of the Code of Conduct and Conflict of Interest Forms from all board members ASAP.

The Meeting adjourned at 9:32 a.m.

Respectfully submitted,

Wade Kirby
Director of Development

Great Swamp Watershed Association
Investment & Endowment Policy

Investment & Endowment Policy – Modified 11/22/2019 Board Approved, (previously Modified/Board Approved 03/16/17; 3/31/16 04/17/15)

Deleted: 0
Deleted: 1

**Approved by the
Finance
Committee
4.17.23**

Purpose: To ensure the organization has responsible and prudent investment and management of its financial assets and how those assets may be used to have a secure and lasting source of dedicated funds to support the goals of the organization.

Restrictions:

The Investment & Endowment Fund is predominantly a board designated fund. Any funds that have been solicited specifically for Endowment are restricted and tracked in the Donor Database and separately maintained in a spreadsheet by the Finance Director. The permanently restricted funds will be noted each year in the annual report. For Fiscal Year 2022, the amount was \$68,050.

Deleted: Endowment

The organization maintains an Operational Investment Account that is for operational purposes and is not restricted. These funds may be used by operations as needed for up to 15% or \$50,000 in any one year. A financial need beyond \$50,000 requires board approval.

Board Designated Allowable Uses of Investment & Endowment Funds:

4% of the total funds each year may be transferred and used for the operation of the organization. The intention of this transfer is to draw from the Investment & Endowment annually an amount that is less than the average amount earned each year. This amount may be modified with a 2/3 vote of the entire Board of Trustees.

Deleted: Endowment

The date the draw will be calculated on is June 30 and will be based on a previous 12 month average balance. The Finance Committee will determine when to actually take the 4% draw after reviewing the current financial picture of the organization. The Finance Committee will recommend any adjustments to how the funds should be taken to ensure the funds remain in line with the approved allocation mix.

Should the organization need to borrow funds from the Investment & Endowment Funds for an operational deficit, those funds may be borrowed from the Investment Fund. The Budget Deficit Policy procedures would remain in effect until such time as the funds are paid back. A loan for the operation of the organization would require a 2/3 vote of the entire Board of Trustees and may not exceed 10% of the total value of the board designated funds.

Deleted: Endowment
Deleted: Trigger
Deleted: P

In addition, the Board of Trustees may from time to time be required to legally defend and protect the conservation easements and land owned in fee. The Board may elect to restrict the funds necessary for the protection of the conservation of those assets from the Investment fund. The board may use no more than 25% of the total Investment & Endowment Fund that is board designated for the legal protection and stewardship of such assets. The expenditure of these funds requires board approval. See also *Policy for Funding Stewardship*.

Deleted: Endowment

The Board restricts the following funds for the Conservation Easement Stewardship and 6F; 11A; 12A Endowment modified Board Approved 11/22/2019; 3/16/2017; previous 3/31/16

Deleted: 0
Deleted: 1

Great Swamp Watershed Association
Investment & Endowment Policy

D. Opening an account / Managing the account

The initial set up will be handled by the Treasurer and the Finance Director. This will include opening accounts and transferring funds. Dual signatures of Treasurer and Finance Director are required on asset transfers out of the account and withdrawals, excluding the 4% draw transactions.

Deleted: c

E. Responsibilities of the Finance Director

- The Finance Director shall keep all the necessary accounting records.
- Endowment Funds will be deposited as received unless amounts received are small (under \$1,000). If small amounts are received, they will be accumulated and deposited once a month at the beginning of the month. Donations under \$1,000 will not be considered Endowment Funds, instead, they will be included in the Board Designated Investment Fund.
- Four percent of total assets may be distributed to the Association once a year. Any withdrawal in excess of 4% requires board approval other than as previously noted on the Operational Reserve.

Deleted: D

F. Responsibilities of the Treasurer and the Finance Committee

- The Funds' performance will be monitored by the Finance Committee.
- The Finance Committee will approve any changes within the asset allocation between asset classes within the overall portfolio allocation.
- The finance committee is responsible for reviewing the asset allocation of the Operational Investment Account, the Investment Account and the Endowment Funds.
- A quarterly presentation will be made to the Board on the value of the fund and report annually on the performance of the fund.
- The Finance Committee and Board should focus on three and five-year returns.

Deleted: E

Deleted: e

Deleted: f

Re- Approved and Adopted by the Board of Trustees on the _____ day of May 2023; previously approved 11/22/2019 3/16/17; 3/31/16
19.

Deleted: Endowment Policy Amended from 10/21/2019 Amended, Approved and Adopted by the Board of Trustees on the _____ day of _____, 20

Deleted: 0

Deleted: 1

6F; 11A; 12A Endowment modified Board Approved 11/22/2019; 3/16/2017; previous 3/31/16

Great Swamp Watershed Association
Financial Oversight Policy

Financial Oversight Policy – PROPOSED UPDATES 4.17.23 FINANCE COMMITTEE

Updated 11/22/21, (prev. Updated 3/31/16; 3/27/15, 10/24/12)

Deleted: 19

Prepared by - Director of Finance

Purpose: To maintain all aspects of financial management to ensure the effective and efficient running of the organization. To ensure the financial records are maintained in Generally Accepted Accounting Principles, GAAP compliance and in compliance with all applicable state and federal statutes. Every effort will be made to protect against fraud. The size of the organization limits the ability to create significant separation of responsibilities in a cost-effective manner, so it is the fiduciary responsibility of the Director of Finance to protect the organization with policies whenever practical.

1. Financial Management:

Financial Review – Ensure the organization has an annual audit performed by a qualified outside financial advisor and that the audit meets the requirements of the State of New Jersey and IRS. This report must be presented to the Board of Trustees upon completion.

Auditor:

Change auditor approximately every 5 years to ensure there is another perspective in the review process. Prepare all financial records for the audit. Assist auditor as needed for the fiscal year-end audit.

Budget –

An inclusive annual operating budget is generated prior to the start of the fiscal year and approved by the Finance Committee, the Executive Committee and the Board of Trustees. This is a critical process for the effective management of programs and strategic planning. The board is provided the budget in advance of the meeting so they have time to review it. In addition, the board meeting is used to discuss the changes and details to ensure that we remain focused on the mission. The Budget should remain in line with the strategic plan and is targeted to have annual revenues in line with annual expenses. Any significant deviations must be addressed and approved. Development Director and Executive Director are key in finalizing the results. All programs are reviewed and changes are addressed versus prior year so that they will be captured accurately in the Budget. Education and Stewardship Director and Water Quality Director are requested to provide their specific changes and needs for programming. The Budget Process begins immediately after the close & reconciliation of March results.

Budget Deficit Policy, formerly Financial Trigger Policy – see specific policy – Ensure that the policy is followed, reviewed and communicated as needed.

Funds for Stewardship and Enforcement – Ensure the funds necessary for the Stewardship and Enforcement of land and easements of GSWA are segregated and tracked as per the requirements of Accreditation by the Land Trust Alliance.

Sale or Transfer of Assets – see policy *Sale and Transfer of Assets*

Accounts Payable and Vendor Selection-

Great Swamp Watershed Association
Financial Oversight Policy

The Board Treasurer will remain the overseer of the account, however the only registered agents are Director of Finance. At any random time the Executive Director, Treasurer and Board may request data on the Investments. Ensure the Finance committee reviews the Investments and makes recommendations to the Board. Ensure the board is presented the account status at board meetings. The Investment & Endowment Fund is predominantly board restricted, however some funds are specifically restricted as Endowment Funds. Ensure those restricted funds are tracked on an excel spreadsheet and maintained and reported in the audited reports.

Deleted: and the Treasurer

Deleted: e

Deleted: f

Credit Card Security Management – see specific policy. At the end of each month, ensure any full credit card numbers received from donors in written form are made illegible and remain in a locked cabinet until shredded. After close of the fiscal year and after the audit, shred all financial records with credit card numbers. Shred all original checks for the prior fiscal year with a cross hatched method.

Record Maintenance

Ensure all records are maintained to meet any audit requirements, financial reviews, IRS requirements, GAAP requirements and are maintained in a manner that will ensure the privacy of our donors and business activity. All records that are deemed confidential to an individual donor are password protected and stored in a manner to ensure the confidentiality of the information and is purged according to the Records Policy. Any court order would supersede any purge of confidential data.

Back-up – Ensure routine back up of financial data to G:\Quickbooksbackup\ so that there is no significant loss of data. The data is stored on the desktop and on the G drive. Ensure the data is also backed up on the cloud. The data must at all times be password protected and the password is stored under lock with two keys. One with the Executive Director and the other the Financial Director.

QuickBooks and other pertinent financial records –

Ensure financial data is maintained and backed up in a timely fashion both locally and on the cloud and at all times is password protected with the password maintained in a locked cabinet accessible by the Director of Finance and the Executive Director. Occasionally make an offsite back up to a flash drive and store in a secure, safe location which could be with the Auditor.

G:\Finance\ – Ensure all necessary financial forms are maintained on the shared directory to include but not limited to: 990 Forms; Tax Exempt Forms 501(c); NJ Registration of Charities in good standing; Annual Reports; Financial Reports; Certificate of Incorporation; Tax Reports; NJ State Sales Tax Exemption ST-5 as well as the Budget and Strategic Plan. This ensures we continue to keep an open and accessible view of our financial position. Post the 990 and audited report on the website.

Additional Responsibilities of Director of Finance:

2. Safety – GSWA has a proactive, open door policy on all safety issues. Any issue is immediately addressed. Safety is addressed at every staff meeting.
3. Human Resources – oversee Human Resource Policies and Issues as they arise. Mediate and address in a timely fashion any Human Resource based issues. Seek outside counsel if needed. Ensure that the Employee Handbook is reviewed and updated as needed. Ensure all new

**Budget Deficit Policy PROPOSED UPDATES 4.17.23 FINANCE
COMMITTEE**

Amended 1/20/2023 Previously 11/22/2019; 03/31/2016; 4/17/15

Purpose: To ensure timely review of the financial health of the organization.

The following safeguards are put in place to ensure that actual performance in each fiscal year equals or exceeds the budgeted results.

The following triggers will require action by the Finance Committee. At the Finance Committee's discretion, a trigger may be presented to the full board for appropriate action.

1. If the Gala generates in total a net amount that falls short of the budgeted amount in excess of 10%.
2. Individual contributions fall short of budgeted amount by 10% as of December 31.
3. Net income for the first half of the fiscal year underperforms the budget by 10%.
4. Third quarter year to date net income underperforms budget by 10%.
5. Fourth quarter net income results in a deficit for the fiscal year.

The Board will formally review actual versus budget at a minimum semi-annually.

Re- Approved and Adopted by the Board of Trustees on the 20th day of January, 2023;

previously approved 11/22/2019; 3/31/2016; 04/17/2015

Note: The budget will be seasonalized based on history and significant known changes.

Executive Director report for May 19, 2023

Hi everyone, I'll share the most exciting news first. As I have already emailed you all, we finally made concrete progress on acquiring the Ferber property in Chatham for our new "home". Monday, May 1, PSEG proposed the subdivision creating our 3 acre lot with the house and barn to the Chatham Planning Board. With a packed audience of neighbors, there were a lot of questions about flooding and drainage, but the subdivision resolution passed unanimously. Next step is for PSEG to get BPU approval and then we need to go to the Board of Adjustment for change of use from residential to institutional use. So, still a couple of hurdles, but hopefully everything will continue to go smoothly. If anyone has not been out to see the property yet, I love an excuse to go again and would be happy to meet anyone out there. Just let me know!

I worked with Lynne to submit a massive EPA environmental grant application. It is for \$500,000 for three years to work in Paterson with numerous partners on a youth advocacy and green infrastructure initiative. It's a long shot and we won't hear until the fall, but it's a great grant and we can use the concepts for other grants.

I spent a lot of time on the land accreditation issue. I spoke with at least eight different attorneys, all of whom do not believe the land trust issue is significant. I hired Ed Ahart at Schenck Price and hope to have his opinion letter by the board meeting. Board members will then need to watch a land trust webinar and review the attorney letter and we need to create a couple of policies moving forward.

Program staff and I had a meeting with Students 2 Science to discuss continuing our relationship with them as our initial agreement ends this spring. We will continue to offer 8-10 school experiential learning opportunities in the fall and spring for underserved students through S2S.

I continued to work with Morris Museum on our upcoming joint programming and finalized our showing of the film Dark Waters on July 7 at Bickford theatre with a panel discussion on PFAS after the movie.

I attended the Morris Museum annual gala. They had a lovely crowd, but our gala is better! I also attended the Mental Health Association gala to honor both Sally Glick and Mikie Sherrill. Also lovely, but again ours is better!!

I met with Scott Dvorak, the NJ State Director of Trust for Public Land, and then attended their virtual board meeting at his request. Scott would like to form a collaborative of entities working in the Passaic.

We held a finance committee meeting, a development committee meeting, and a trusteeship meeting.

I met with a couple of potential trustees as well as introducing them to at least one of our co-chairs.

Val and I worked on the upcoming Advisory Council dinner. Please mark your calendars for June 13.

I took a tour of Rolling Knolls with the Refuge staff and Sandra on a huge piece of equipment which let us see parts of the refuge and Rolling Knolls that would have otherwise been inaccessible. This also enabled Sandra to identify a few locations for follow up PFAS testing.

I continue to hear absolutely nothing from EPA on a status update at Rolling Knolls. I am still hoping that Congresswoman Sherrill can help move the needle. The Congresswoman's office has a meeting scheduled with DEP which could help. I am spending a lot of time reviewing Freedom of Information Act

documents and the correspondence from DEP does seem to be more inclined toward the resolution the Refuge and we prefer.

I saw the American River movie again and we are working on scheduling another showing this summer as it continues to be in high demand.

We are still struggling with an honoree for the gala in addition to the tribute to Jay DeLaney. The governor can't do it and we are waiting to see if Senator Booker can commit.

I have been meeting with staff for admin, development, and programming to review budgets for forecasting the end of this fiscal year and for budgeting next year.

I have also been helping Val with the music festival. As you know, this year we are moving it to Brook Valley Farm on Loantaka Way (this is Nic Platt's mom's property). Please mark your calendars for June 25.



Do Not Use For Account Transactions
PO BOX 3009
MONROE, WI 53566-8309

GREAT SWAMP WATERSHED ASSOCIAT
PO BOX 300
NEW VERNON NJ 07976-0300

March 31, 2023, quarter-to-date statement
View your statements online at vanguard.com.

Business Account Svcs: 800-984-5919

Assets listed in this statement are held by Vanguard Brokerage Services® (VBS), a division of Vanguard Marketing Corporation (VMC), member FINRA and SIPC. Summary data are provided solely as a service and are for informational purposes only.



Business Account Svcs: 800-984-5919

Statement overview

Total value of all accounts as of March 31, 2023
\$1,736,958.52

Accounts	Value on 12/31/2022	Value on 03/31/2023
Great Swamp Watershed Associat		
Corporation brokerage account	\$425,835.61	\$446,292.04
Corporation brokerage account	\$1,223,438.47	\$1,290,666.48
Total	\$1,649,274.08	\$1,736,958.52

Asset mix



	Value on 03/31/2023
66.1% Stocks	\$1,148,301.67
28.6% Bonds	496,437.32
5.3% Short-term reserves	91,704.48
0.0% Other	515.05
Total	\$1,736,958.52

Your percentages are based on your holdings as of the prior month-end. Recalculated values are included. See Disclosures for more information.



Corporation brokerage account—37512647

Business Account Svcs: 800-984-5919

Great Swamp Watershed Associat

Account overview

Total account value as of March 31, 2023

\$446,292.04

Year-to-date income

Taxable income	\$3,060.77
Nontaxable income	0.00
Total	\$3,060.77

Balances and holdings for Vanguard Brokerage Account—37512647

Your securities are held in your cash account, unless otherwise noted. This section only shows securities that were held in the account at the end of the time period indicated.

Sweep program

Name	Quantity	Price on 03/31/2023	Balance on 12/31/2022	Balance on 03/31/2023
VANGUARD FEDERAL MONEY MARKET FUND	85,421.2600	\$1.00	\$84,490.74	\$85,421.26
7-day SEC Yield: 4.76%				
Total Sweep Balance			\$84,490.74	\$85,421.26

Mutual funds

Symbol	Name	Average price per share	Total cost	Quantity	Price on 03/31/2023	Balance on 12/31/2022	Balance on 03/31/2023
VFIAX	VANGUARD 500 INDEX ADMIRAL CL	\$240.66	\$64,092.70	266.3190	\$379.07	\$93,922.01	\$100,953.54
Est. annual income: \$1,585.31; Est. yield: 1.57%							



Corporation brokerage account—37512647

Business Account Svcs: 800-984-5919

Great Swamp Watershed Associat

Balances and holdings for Vanguard Brokerage Account — 37512647 continued

Mutual funds continued

Symbol	Name	Average price per share	Total cost	Quantity	Price on 03/31/2023	Balance on 12/31/2022	Balance on 03/31/2023
VFIDX	VANGUARD INTERMEDIATE TERM INVEST GRADE ADMIRAL CL	9.22	166,875.68	18,108.2470	8.56	149,313.47	155,006.59
	Est. annual income: \$5,032.28; Est. yield: 3.25%						
VTIAX	VANGUARD TOTAL INTL STOCK INDEX ADMIRAL CL	27.68	55,647.63	2,010.5180	29.65	55,889.91	59,611.85
	Est. annual income: \$1,705.52; Est. yield: 2.86%						
	Total Est. annual income: \$8,323.11; Est. yield: 2.64%					\$299,125.39	\$315,571.98

ETFs

Symbol	Name	Total cost	Quantity	Price on 03/31/2023	Balance on 12/31/2022	Balance on 03/31/2023
ESGU	ISHARES ESG AWARE MSCI USA ETF	\$38,996.77	500.8160	\$90.4500	\$42,219.48	\$45,298.80
	Est. annual income: \$672.59; Est. yield: 1.48%					
	Total Est. annual income: \$672.59; Est. yield: 1.48%				\$42,219.48	\$45,298.80

Account activity for Vanguard Brokerage Account — 37512647

This section shows transactions that have settled by March 31, 2023.

Income summary

	Dividends	Interest	Tax-exempt interest	Short-term capital gains	Long-term capital gains	Other income
March	\$1,555.42	\$0.00	\$0.00	\$0.00	\$0.00	\$0.00
Year-to-date	3,060.77	0.00	0.00	0.00	0.00	0.00

March 31, 2023, quarter-to-date statement



Corporation brokerage account—37512647

Business Account Svcs: 800-984-5919

Great Swamp Watershed Associat

Account activity for Vanguard Brokerage Account — 37512647 continued

Completed transactions

Settlement date	Trade date	Symbol	Name	Transaction type	Account type	Quantity	Price	Commissions & fees	Amount
03/17	03/17	VTIAX	VANGUARD TOTAL INTL STOCK INDEX ADMIRAL CL	Dividend	-	-	-	-	\$124.18
03/17	03/17	VTIAX	VANGUARD TOTAL INTL STOCK INDEX ADMIRAL CL	Reinvestment	Cash	4.4190	\$28.1000	-	-124.18
03/23	03/23	VFAX	VANGUARD 500 INDEX ADMIRAL CL	Dividend	-	-	-	-	394.99
03/23	03/23	VFAX	VANGUARD 500 INDEX ADMIRAL CL	Reinvestment	Cash	1.0850	364.1800	-	-394.99
03/29	03/29	ESGU	ISHARES ESG AWARE MSCI USA ETF	Dividend	-	-	-	-	233.92
03/29	03/29	ESGU	ISHARES ESG AWARE MSCI USA ETF	Reinvestment	Cash	2.6510	88.2240	-	-233.92
03/31	03/31	VFIIX	VANGUARD INTERMEDIATE TERM INVEST GRADE ADMIRAL CL	Dividend	-	-	-	-	470.36
03/31	03/31	VFIIX	VANGUARD INTERMEDIATE TERM INVEST GRADE ADMIRAL CL	Reinvestment	Cash	54.9490	8.5600	-	-470.36
03/31	03/31	-	VANGUARD FEDERAL MONEY MARKET FUND	Dividend	-	-	-	-	331.97
03/31	03/31	-	VANGUARD FEDERAL MONEY MARKET FUND	Reinvestment	-	-	-	-	-331.97

If you had an adjustment to a dividend or interest payment from a previous month, the monthly amount shown under the Income Summary section of your brokerage statement may be overstated.

March 31, 2023, quarter-to-date statement



Corporation brokerage account—31806230

Business Account Svcs: 800-984-5919

Great Swamp Watershed Associat

Account overview

Total account value as of March 31, 2023

\$1,290,666.48

Year-to-date income

Taxable income	\$6,352.63
Nontaxable income	0.00
Total	\$6,352.63

Balances and holdings for Vanguard Brokerage Account — 31806230

Your securities are held in your cash account, unless otherwise noted. This section only shows securities that were held in the account at the end of the time period indicated.

Sweep program

Name	Quantity	Price on 03/31/2023	Balance on 12/31/2022	Balance on 03/31/2023
VANGUARD FEDERAL MONEY MARKET FUND	6,283.2200	\$1.00	\$6,214.78	\$6,283.22
7-day SEC Yield: 4.76%				
Total Sweep Balance			\$6,214.78	\$6,283.22

Mutual funds

Symbol	Name	Average price per share	Total cost	Quantity	Price on 03/31/2023	Balance on 12/31/2022	Balance on 03/31/2023
VFIAX	VANGUARD 500 INDEX ADMIRAL CL	\$158.00	\$149,710.28	947.5120	\$379.07	\$334,156.96	\$359,173.37
Est. annual income: \$5,640.25. Est. yield: 1.57%							



Corporation brokerage account—31806230

Business Account Svcs: 800-984-5919

Great Swamp Watershed Associat

Balances and holdings for Vanguard Brokerage Account—31806230 continued

Mutual funds continued

Symbol	Name	Average price per share	Total cost	Quantity	Price on 03/31/2023	Balance on 12/31/2022	Balance on 03/31/2023
VFDX	VANGUARD INTERMEDIATE TERM INVEST GRADE ADMIRAL CL Est. annual income: \$11,084.53; Est. yield: 3.25%	9.31	371,536.46	39,886.7680	8.56	328,890.61	341,430.73
VIMAX	VANGUARD MID CAP INDEX ADMIRAL CL Est. annual income: \$4,382.84; Est. yield: 1.54%	223.51	243,789.79	1,090.7210	261.25	274,342.99	284,950.86
VMFXX	VANGUARD FEDERAL MONEY MARKET INVESTOR CL Est. annual income: \$21.32; Est. yield: 4.14%	-	-	515.0500	1.00	509.45	515.05
VTIAX	VANGUARD TOTAL INTL STOCK INDEX ADMIRAL CL Est. annual income: \$6,655.91; Est. yield: 2.86%	28.25	221,673.44	7,846.1770	29.65	218,114.01	232,639.14
Total Est. annual income: \$27,784.85; Est. yield: 2.28%						\$1,156,014.02	\$1,218,709.15

ETFs

Symbol	Name	Total cost	Quantity	Price on 03/31/2023	Balance on 12/31/2022	Balance on 03/31/2023	
ESGU	ISHARES ESG AWARE MSCI USA ETF Est. annual income: \$975.12; Est. yield: 1.48%	\$68,631.47	726.0820	\$90.4500	\$61,209.67	\$65,674.11	
Total Est. annual income: \$975.12; Est. yield: 1.48%						\$61,209.67	\$65,674.11



Corporation brokerage account—31806230
Great Swamp Watershed Associat

Business Account Svcs: 800-984-5919

Account activity for Vanguard Brokerage Account —31806230

This section shows transactions that have settled by March 31, 2023.

Income summary

	Dividends	Interest	Tax-exempt interest	Short-term capital gains	Long-term capital gains	Other income
March	\$4,307.62	\$0.00	\$0.00	\$0.00	\$0.00	\$0.00
Year-to-date	6,352.63	0.00	0.00	0.00	0.00	0.00

Completed transactions

Settlement date	Trade date	Symbol	Name	Transaction type	Account type	Quantity	Price	Commissions & fees	Amount
03/17	03/17	VTIAX	VANGUARD TOTAL INTL STOCK INDEX ADMIRAL CL	Dividend	Cash	-	-	-	\$484.61
03/17	03/17	VTIAX	VANGUARD TOTAL INTL STOCK INDEX ADMIRAL CL	Reinvestment	Cash	17,2460	\$28,1000	-	-484.61
03/22	03/22	VIMAX	VANGUARD MID CAP INDEX ADMIRAL CL	Dividend	Cash	-	-	-	1,016.11
03/22	03/22	VIMAX	VANGUARD MID CAP INDEX ADMIRAL CL	Reinvestment	Cash	4,0850	248,7400	-	-1,016.11
03/23	03/23	VFIAX	VANGUARD 500 INDEX ADMIRAL CL	Dividend	Cash	-	-	-	1,405.29
03/23	03/23	VFIAX	VANGUARD 500 INDEX ADMIRAL CL	Reinvestment	Cash	3,8590	364,1800	-	-1,405.29
03/29	03/29	ESGU	ISHARES ESG AWARE MSCI USA ETF	Dividend	Cash	-	-	-	339.14
03/29	03/29	ESGU	ISHARES ESG AWARE MSCI USA ETF	Reinvestment	Cash	3,8440	88,2240	-	-339.14

March 31, 2023, quarter-to-date statement



Corporation brokerage account—31806230

Business Account Svcs: 800-984-5919

Great Swamp Watershed Associat

Account activity for Vanguard Brokerage Account — 31806230 continued

Settlement date	Trade date	Symbol	Name	Transaction type	Account type	Quantity	Price	Commissions & fees	Amount
03/31	03/31	VFIDX	VANGUARD INTERMEDIATE TERM INVEST GRADE ADMIRAL CL	Dividend	-	-	-	-	1,036.05
03/31	03/31	VFIDX	VANGUARD INTERMEDIATE TERM INVEST GRADE ADMIRAL CL	Reinvestment	Cash	121.0340	8.5600	-	-1,036.05
03/31	03/31	VMFXX	VANGUARD FEDERAL MONEY MARKET INVESTOR CL	Dividend	-	-	-	-	2.00
03/31	03/31	VMFXX	VANGUARD FEDERAL MONEY MARKET INVESTOR CL	Reinvestment	Cash	2.0000	1.0000	-	-2.00
03/31	03/31	-	VANGUARD FEDERAL MONEY MARKET FUND	Dividend	-	-	-	-	24.42
03/31	03/31	-	VANGUARD FEDERAL MONEY MARKET FUND	Reinvestment	-	-	-	-	-24.42

If you had an adjustment to a dividend or interest payment from a previous month, the monthly amount shown under the Income Summary section of your brokerage statement may be overstated.

Disclosures

Cost basis information

Vanguard is required to report cost basis information to the IRS for sales of covered securities in taxable (nonretirement) accounts. Covered securities are generally stock or mutual funds acquired on or after January 1, 2011 and 2012, respectively. Unless you select another method, we'll use the "first in, first out" (FIFO) accounting method for sales of stocks and exchange-traded funds (ETFs) and the "average cost" method for sales of mutual funds. For more cost basis information go to investor.vanguard.com/taxes/cost-basis

Gain or loss. The gain or loss realized by the sale or redemption, calculated by subtracting the cost from the proceeds. Gains and losses are generally short-term if the security was held a year or less, and long-term if held more than a year.

For our brokerage clients

Your brokerage cash and/or securities are held in custody by Vanguard Brokerage Services, a division of Vanguard Marketing Corporation, member FINRA and SIPC. Vanguard funds not held through your Vanguard Brokerage Services (VBS) account are held by The Vanguard Group, Inc., and are not protected by SIPC.

I. General information and key terms

Advice. Vanguard Brokerage Services doesn't provide tax, investment, or legal advisory services, and no one associated with Vanguard Brokerage Services is authorized to render such advice.

Direct Participation Program (DPP) and Real Estate Investment Trust (REIT). DPP and REIT securities are generally illiquid. The value of the security will be different than its purchase price. Any estimated value on your statement may not be realized when you seek to liquidate the security.

Financial statement. A Vanguard Brokerage financial statement is available for your inspection at any time upon request to Vanguard Brokerage Services.

Free credit balance. Any free credit balance carried for your account represents funds payable on demand, which, although properly accounted for on Vanguard Brokerage's books of record, aren't segregated and may be used in the conduct of its business to the extent permitted by law. Your settlement fund may be liquidated upon your request and the proceeds remitted to you.

Dividend reinvestment. When reinvesting dividends of eligible stocks, ETFs, and closed-end funds, Vanguard Brokerage Services combines cash distributions from the accounts of all clients who have March 31, 2023, quarter-to-date statement

requested reinvestment in the same security, and then uses that combined total to purchase additional shares of the security in the open market. The new shares are divided proportionately among the clients' accounts, in whole and fractional shares rounded to four decimal places. If the total purchase can't be completed in one trade, clients will receive shares purchased at the weighted average price paid by Vanguard Brokerage Services. Participants in our free dividend reinvestment program should refer to the "Completed transactions" area of the "Account activity for Vanguard Brokerage Account" section of their Vanguard statements for details of transaction history and dates.

For dividend reinvestment of mutual funds held in your brokerage account, the instructions are provided to the fund and the "settlement date" and "trade date" on your statement will generally represent the day the transaction is entered in your account record. Call Vanguard Brokerage Services with any questions.

Reporting brokerage account discrepancies. Promptly report in writing any inaccuracies or discrepancies in your Vanguard Brokerage account (including unauthorized trading) to Vanguard Brokerage Services. Any oral communication must be confirmed in writing to further protect your rights, including your rights under the Securities Investor Protection Act.

Margin accounts. If you maintain a margin account, this is a combined statement of your general account and a special memorandum account maintained for you under Regulation T issued by the Board of Governors of the Federal Reserve System. The permanent record of the separate account as required by Regulation T is available for your inspection upon request to Vanguard Brokerage Services. All securities must be held in your margin account. Note that purchases of open-end mutual funds and Vanguard ETFs[®] will settle in your cash account and after 30 days be moved into your margin account.

Money market fund transactions. Vanguard Brokerage Services may elect to send a monthly statement, in lieu of an immediate confirmation, for transactions executed pursuant to a periodic plan or an investment company plan, or executed in shares of any open-end registered money market mutual fund.

Orphaned fractional share transactions. Vanguard Brokerage Services may elect to send a monthly statement, in lieu of an immediate confirmation, for transactions executed to liquidate orphaned fractional share positions. Orphaned fractional share positions are fractional share positions held without a corresponding whole share position. Liquidations of these positions are executed by Vanguard Brokerage Services on a principal basis at the previous day's closing price, and the proceeds are credited to your account. No transaction fee is charged.



Business Account Svcs: 800-984-5919

Open orders. A good-till-cancelled (GTC) order will remain in effect for 60 calendar days after the business day on which the order was placed. If the 60th day falls during a weekend or on a holiday, the order will be canceled on the next business day before the markets open. GTC orders are automatically entered on a "do not reduce" (DNRR) basis. The limit price won't be adjusted when a stock goes "ex-dividend." Orders for securities undergoing corporate actions such as, but not limited to, stock splits, stock dividends, special cash dividends, and spin-offs may be canceled before the market opening on the ex-dividend date of the corporate action. You must maintain records of all open orders. Be sure to review your open GTC orders periodically.

Option accounts. Information regarding commissions and charges related to the execution of an options transaction is provided in the transaction confirmation sent to you at the time of the transaction. These are also available upon request. You should advise us promptly of any changes in your investment objectives or financial situation.

Tax information. After year-end, Vanguard Brokerage Services is required to provide tax information to the IRS and other governmental authorities. At that time, you'll receive necessary information on the annual tax information statement; use that statement to prepare your tax filings. Note that certain types of assets typically need corrected tax forms.

Trade execution. Vanguard Brokerage Services may have acted as principal, agent, or both in the placement of trades for your account. Details are provided upon request to Vanguard Brokerage Services.

Average pricing. If average price transaction is indicated on this statement, details regarding the actual execution prices are available upon request to Vanguard Brokerage Services.

When issued. A short form of "when, as, and if issued." The term indicates a conditional transaction in a security authorized for issuance but not as yet actually issued. All "when issued" transactions are on an "if" basis, to be settled if and when the actual security is issued.

II. Portfolio holdings

The net market value of the securities in your account, including short positions, is reflected in this statement on a trade-date basis at the close of the statement period. The market prices have been obtained from quotation services that we believe to be reliable; however, we can't guarantee their accuracy. Securities for which a price isn't available are marked "—" and are omitted from the total. Prices listed reflect quotations on the statement date. Current prices are listed to help you track your account and aren't suitable for tax purposes. Account balances provided on the statement are displayed in short-form using only two decimal places. Please log on to your account at Vanguard.com to review your account balances. Accrued interest represents interest earned but not yet received.

Fund data on Vanguard.com is generally updated mid-month. Depending on when you log on, there may be a difference between the asset mix shown on your statement and the data shown online.

March 31, 2023, quarter-to-date statement

There also may be a difference between your fund's actual asset allocation and its target allocation. For more information about your fund's target allocation, go to Vanguard.com.

Estimated values on statements. Vanguard Brokerage Services relies on external vendors to provide estimated, periodic valuation and market-price information for securities listed in your account statement. From time to time, this information isn't available or isn't received in time for posting to your account statement. In this case, the valuation or market price on your statement is marked "—" and the security hasn't been valued for purposes of calculating account totals. For owners of auction-rate securities: If an estimated valuation is provided on your account statement for auction-rate securities, please note that due to market illiquidity, you may not be able to sell the security at or near the estimated valuation listed on your account statement.

The estimated annual income (EAI) and estimated yield (EY) figures are estimates and are for informational purposes only. EAI represents estimated income to be distributed by a specific position. EAI may be negative on short positions. EY represents the estimated yield of a specific position based on its EAI and current price. EY reflects only the income generated by an investment. It does not reflect changes in the investment's price, which may fluctuate. EAI and EY for certain types of securities includes return of principal or capital gains, in which case the EAI and EY is not limited to realizable income. Actual income and yield may be higher or lower than the estimated amounts. These figures should not be considered a forecast or guarantee of future results. They are computed using information from providers believed to be reliable; however, no assurance can be made as to the accuracy. Since interest and dividend rates are subject to change at any time and may be affected by current and future economic, political, and business conditions, they should not be relied on for making investment, trading, or tax decisions. The money market settlement fund 7 day SEC yield is calculated by annualizing its daily income distributions for the previous 7 days, which is not the same methodology for calculating EY for other positions held in your account (s). Calculation methodologies differ by security type. Certain security types estimate the annual yield based on historical actual income paid while others estimate future yield based on existing conditions. Please contact Vanguard Brokerage Services for current information regarding your investments and the current estimated valuations of your holdings.



Business Account Svcs: 800-984-5919

Asset mix for some funds recalculated by Vanguard. If the "Asset mix" section of your "Statement Overview" page has a footnote that reads "Recalculated values are included," the asset allocation breakdown of particular funds within your portfolio among stocks, bonds, and short-term reserves has been calculated using long positions, margin credit or debit balances; short positions have been excluded. Certain funds employ trading strategies, such as risk hedging, short selling, and use of leverage and derivatives, that could result in significant short positions that can't be displayed using a standard asset allocation pie chart. Exclusion of these short positions may have a significant impact on the "Asset mix" pie chart. For more information about the strategies or holdings of a particular fund, see the fund's prospectus.

S&P Rating. Copyright 2021, S&P Global Market Intelligence. Reproduction of S&P Credit Ratings ("Ratings") in any form is prohibited except with the prior written permission of S&P Global Market Intelligence (together with its affiliates, "S&P Global"). S&P Global does not guarantee the accuracy, completeness, timeliness or availability of any information, including Ratings, and is not responsible for any errors or omissions (negligent or otherwise), regardless of the cause, or for the results obtained from the use of Ratings. S&P Global shall not be liable for any damages, costs, expenses, legal fees, or losses (including lost income or lost profit and opportunity costs) in connection with any use of Ratings. Ratings are statements of opinions and are not statements of fact or recommendations to purchase, hold or sell securities. They do not address the market value of securities or the suitability of securities for investment purposes, and should not be relied on as investment advice.

Great Swamp Watershed Association Profit & Loss Budget Performance March 2023

	Mar 23	Budget	% of Budget	Jul '22 - Mar 23	YTD Budget	% of Budget	Annual Budget
Ordinary Income/Expense							
Income							
4% Fund Transfer Draw	0	0	0%	60,986 1	56,000	109%	56,000
401K Operational Reserve BD	0	0	0%	0	0	0%	25,000
Advocacy Operational Reserve BD	0	0	0%	0	0	0%	20,000
Annual Event	0	0	0%	145,073 2	175,000	83%	175,000
Corporate	0	0	0%	58,850 4	59,750	98%	69,750
Corporate Stewardship Restricted	0	0	0%	9,677	0	100%	8,000
Deferred Income from Prior Year	0	0	0%	23,000	23,000	100%	23,000
Foundation Support	40,000	35,000	114%	234,400 3	226,000	104%	284,000
Government Grants	0	0	0%	4,653 5	10,000	47%	20,000
Individual - Membership	4,561	6,146	74%	65,467	65,838	99%	89,000
Individual Major Donors	17,750	8,041	221%	195,412 6	188,416	104%	222,000
Individual Trustee Giving	155	155	100%	25,335	26,400	96%	30,000
Merchandise Misc	0	0	0%	41	0	100%	0
Music Fest Event	10,845	0	100%	11,595	0	100%	49,006
Native Plant Program	435	0	100%	1,330	0	100%	60,750
Other incomes misc	28	42	67%	334	375	89%	500
Programs - Education & Outreach	1,420	7,233	20%	16,639	19,783	84%	30,000
Restricted Individual Donations	0	0	0%	45,000 7	5,000	900%	5,000
Total Income	75,195	56,616	133%	897,792	855,562	105%	1,167,006
Gross Profit	75,195	56,616	133%	897,792	855,562	105%	1,167,006
Expense							
Administrative Expense	8,451	10,938	77%	84,019 8	95,116	88%	125,966
Administrative Payroll Total	57,721	58,855	98%	516,576 9	540,192	96%	737,756
Advocacy / CAGs / Other	759	1,667	46%	1,078 10	15,000	7%	40,000
Annual Event Expenses	0	0	0%	32,095	52,069	62%	52,069
Capital Campaign Exp	0	0	0%	0	1,000	0%	2,500
Development Expense	213	88	243%	3,128	5,003	63%	13,165
Education and Outreach	6,030	3,290	183%	10,295	9,830	105%	13,100
Grant Specific Expense	0	0	0%	8,958 11	0	100%	0
Mailing	600	161	374%	3,464 12	7,643	45%	13,359
Membership	6,796	6,987	97%	18,057	18,620	97%	20,280
Music Fest	42	0	100%	99	0	100%	19,000
Native Plant Expenses	0	2,000	0%	719	2,000	36%	41,000
Rent Reimbursable Expense	275	0	0%	1,227	0	0%	0
Stewardship	2,231	1,150	194%	10,913	10,150	108%	25,800
Stewardship Land Acquisition	0	0	0%	10,089	450	2,242%	450
Water Quality	0	2,579	0%	17,614 13	23,212	76%	34,350
Total Expense	83,118	87,713	95%	718,329	780,286	92%	1,138,795
Net Ordinary Income	-7,923	-31,097	25%	179,463	75,276	238%	28,211
Other Income/Expense							
Other Income							
Dividends Received	9,413	0	100%	30,578	0	100%	0
UNREALIZED GAIN ON SEC	78,271	0	100%	20,741	0	100%	0
Total Other Income	87,684	0	100%	51,318	0	100%	0
Other Expense							
Save Noe Pond Expense	0	0	0%	13,624	0	100%	0
Total Other Expense	0	0	0%	13,624	0	100%	0
Net Other Income	87,684	0	100%	37,694	0	100%	0
Net Income	79,761	-31,097	-256%	217,158	75,276	288%	28,211

Great Swamp Watershed Association
Profit & Loss Budget Performance
March 2023

1. For the next fiscal year the Finance Committee will evaluate a draw based on a rolling average or multiple point draw calculation
2. What can the Board do to secure better results in FY 2024.
3. Bauer and Gilford came in under budget; Thrivent is new this year and came in at \$20k; Cestone came in over budget and Leavens gave \$10k which was not budgeted. We have Wallace and Mazer still due by end of the fiscal year and need \$10k TBD.
Foundations are 17% higher than Fy 2022.
4. Investors bank and Kearny bank were not budgeted for and came in at 3.5k and 2.5k respectively. PSEG came in under budget by 7.5K.
We are 31% below last year primarily due to Bayer.
5. in/out
6. Wade continues to bring in new and increased donations
7. This includes \$10k Glasser Foundaiton; Kellogg \$5k and Sblendorio Easement management \$30k
8. mostly timing due to software & computer purchases
9. Favorable due to open positions and a lower than budgeted payroll tax amount.
10. in/out
11. New Watershed Model; Waders and trailer registration
12. timing
13. timing

Grant Recap May 2023

Corporate Restricted		BUDGET	ACTUAL	VARIANCE	NOTES
	Wells Fargo	\$ 15,000.00	\$ 15,000.00	\$0.00	Environmental Education. Awarded in July.
	PSEG	\$ 15,000.00	\$ 7,500.00	-\$7,500.00	Environmental Education, Awarded in November
	BMS	\$ 15,000.00	\$ 15,000.00	\$ -	Environmental Education and WQ equipment, received notification in November
	Kearny Bank Foundation	\$ -	\$ 2,500.00	\$ 2,500.00	Environmental Education submitted 12/15/21. Awarded November 2022.
	First Energy	\$ 4,500.00	\$ 7,500.00	\$ 3,000.00	Environmental Education, awarded in December
	Citizens Bank		\$ 1,000.00	\$ 1,000.00	Environmental Education, applied for \$5K, \$1K award notification in May
	Investors	\$0.00	\$ 3,500.00	\$3,500.00	Environmental Education. Awarded in September.
Corporate Unrestricted					
	Valley Bank	\$ 2,750.00	\$ 2,000.00	\$ (750.00)	General Operating Support, applied in March, received in April. Received a check for \$6500 - \$3K for Gala 2023, \$1.5K for Music Fest
	Columbia Bank		\$ 5,000.00	\$ 5,000.00	General Operating Supported, awarded in April
	BASF	\$7,500.00	\$ 7,500.00	\$0.00	General Operating Support. Awarded in November.
Foundation Restricted					
	Leavens Foundation	\$ -	\$ 10,000.00	#####	PFAS sample analysis and retesting - awarded in November.
	Meerwarth Foundation	\$ 15,000.00	\$ 10,000.00	\$(5,000.00)	Environmental Education, awarded in December
	Roxiticus Foundation	\$ 2,000.00	\$ 1,000.00	\$(1,000.00)	Water Quality Programs, awarded in December
	Lillian Schenck Foundation	\$ 3,000.00	\$ 4,000.00	\$ 1,000.00	Environmental Education, awarded in January
	F.M. Kirby Foundation **	\$ -	\$ 5,000.00	\$ 5,000.00	Capital funding for CMA ** - shed or liability tree removal
	Garden Club of Somerset Hills		1000	\$ 1,000.00	Applied in February for CMA signage, pending
	Marta Heflin Foundation	\$ 5,000.00	\$ 6,200.00	\$1,200.00	CMA Stewardship - awarded in August.
Unrestricted Foundation Support					
	Thrivent Charitable/Edith Hahn Animal and Wildlife Preservation Fund	\$ -	\$ 20,000.00	\$20,000.00	General Operating Support - Awarded in July. New support, renewable for 3 years with a possibility of going to 5 years
	Bauer Foundation	\$ 20,000.00	\$ 10,000.00	-\$10,000.00	General Operating Support - awarded in July. Gave less this year due to family shifting priorities elsewhere in the country.
	Impact 100		\$ 1,000.00	\$1,000.00	General Operating Support- Awarded in Nov.
	Cestone Family Foundation	\$ 25,000.00	\$ 25,000.00	\$0.00	General Operating Support - awarded in November
	Victoria Foundation	\$ 25,000.00	\$ 25,000.00	\$0.00	General Operating Support - awarded in October. 2nd of 3 year phaseout.
	The Fatzler Foundation	\$ 4,000.00	\$ 4,000.00	\$0.00	General Operating Support - awarded in November
	Tyler Foundation	\$ 20,000.00	\$ 20,000.00	\$0.00	General Operating Support - awarded in December
	Stackhouse Foundation	\$ 15,000.00	\$ 15,000.00	\$0.00	General Operating Support - awarded in December
	Cornell Douglas Foundation	\$ 25,000.00	\$ 25,000.00	\$0.00	General Operating Support - awarded in February
	F.M. Kirby Foundation	\$ 35,000.00	\$ 35,000.00	\$0.00	General Operating Support - awarded in March
	Wallace Foundation	\$ 30,000.00	\$ 30,000.00	\$0.00	General Operating Support - awarded in May
	Guilford Foundation	\$ 20,000.00	\$ 15,000.00	-\$5,000.00	General Operating Support - awarded in July
	TOTAL	\$303,750.00	\$328,700.00	\$24,950.00	
Other					
	Cliffbar			\$\$ Request	
				\$ 7,000.00	GOS, pending, applied in May

Bayer Fund		\$ 10,000.00		#####	Environmental Education, applied in February, pending
Investors Bank				\$ 7,500.00	Environmental Education, Applied in February, pending
Morristown Rotary Club				\$ 2,500.00	Applied in February for CMA signage, pending
Mimi Washington Starrett				#####	General Operating Support, applied in March
Congressionally Directed Funding - Bob Menendez Office				#####	CMA Pavilion, applied in March, pending
EPA Environmental Justice Grant, Collaborative Partnership				#####	3-year EJ program in Paterson, collaborating with Rutgers, NJIT, TPL, BGCPP,TCN, pending
Mazer Foundation				\$ 8,000.00	GOS, will apply in May/June
PSEG				\$ 7,500.00	Environmental education, will apply in June
Blue Foundry Charitable Foundation				#####	Environmental education, applied in May, pending
John Ben Snow Memorial Trust				#####	Environmental Education, bussing and Spanish language lessons for education staff. Applied in March
TOTAL				#####	
Glasser Foundation		\$ -	\$ 10,000.00	#####	2nd Topographic Model - awarded in November.
Development Workforce Board of NW NJ			\$ 4,980.00		Government incumbent worker reimbursement program for staff Spanish language instruction. Applied thru reimbursement program for Babbel Spanish language lessons for 6 GSWA staff in February. Will receive reimbursement once staff completes lessons

Communications Board Report – Val Thorpe

May 2023

Upcoming Events/Fundraisers

6th Annual Great Swamp Great Music Festival – Help make this our biggest success yet!



We're just over a month away from our **second largest fundraiser of the year** - Great Swamp Great Music Festival on **Sunday, June 25, 12-6 PM** @ the historic Brook Valley Farm in Chatham Twp.

New this year, we will have a "kids corner" with face painting, games, crafts, and fun photo opportunities. Also, we're bringing back the big tent so attendees have a place to relax and catch some shade.

Our promotions team met on 5/10 to devise a plan to promote the event far and wide. One thing that's clear is **we REALLY need you** help to get involved and help make this our most successful festival yet! Please find a way to participate.

Here's what you can do:

- Identify ONE sponsor and make the ask (find the forms [HERE](#)) or share contact info with Wade
- Purchase tickets [HERE](#)
- Tell your friends
- Like and share our social media posts Facebook, Twitter, Instagram, LinkedIn
- Hang posters at local post offices, grocery stores, restaurants, etc.
- Volunteer and/or find other volunteers

Snapshot (to date):

- \$36,750 in sponsorship money to date: (up \$23K since last board report but we're not there yet!)
- 7 bands – a variety rock, alt-rock, bluegrass, Americana
- 5 food trucks: Cuban, burgers/dogs, vegan, ice cream, funnel cake
- 5 merch vendors

GSWA/Morris Museum Partnership

GSWA has formed a new partnership with The Morris Museum, and we are hosting the first of what we believe will be many family-friendly, water/environment-themed programs to take place over 2 weekends in July. This group of events is titled "Water Workshop Weekends."

A few months ago, **GSWA** and the **Morris Museum (the only Smithsonian affiliate in New Jersey)** met to compare methods and procedures. We were thrilled to discover that we share similar missions regarding nature, protecting the environment, and educating the public. This led to the planning of these joint programs.

Water Workshop Weekends Schedule

(pricing is the same for members of either Morris Museum or GSWA)

Film Screening of *Dark Waters* at the Morris Museum

Friday, July 7 at 6:30-10:00 PM

Tickets: Members \$12 | Non-members \$15

6 Normandy Heights Road, Morristown, NJ 07960

Family Fun Day at the Morris Museum and Two Screenings of *Age of Human: Water*

Saturday, July 8th 11:00 AM-2:30 PM

Tickets: Members Free | Non-members \$12 | Children \$8 (3-17)

Smithsonian Film: *Age of Human: Water* at 11:30 AM and 1:00 PM (Free with Museum Admission)

6 Normandy Heights Road, Morristown, NJ 07960

Outdoor Family Day at the Tiger Lily Lane Trails part of the Great Swamp

Saturday, July 15th 11:00 AM-2:00 PM

Tickets: Members free | Non-members \$12 Children \$8 (3-17)

This event takes place rain or shine.

1 Tiger Lily Lane, Harding Twp., NJ 07960

We believe that this new partnership and the unique programming we are offering will be a big draw for the families and individuals in your readership footprint.

Chairmen's Appeal 2023

I'm in the early stages of crafting this year's Chairmen's appeal. The letter will be mailed out early June. More to follow...

GSWA in the News

The following press releases were published in some or all local news media outlets including New Jersey Hills Media (14 local newspapers), The Daily Record, InsiderNJ.com, The Patch, TapInto, and more.

- May 15, 2023: [Summertime Family-Friendly Water Workshop Weekends](#)
- April 10, 2023: [GSWA Elects Board Co-Chairs-Appoints New Trustees](#)
- April 3, 2023: [GSWA Preserves More Land](#)

Upcoming Press Releases:

- 6th Annual Great Swamp Great Music Festival

Advisory Council Dinner

Mark your calendar, this year's celebratory dinner takes place on June 13, 2023, 6:30 – 9:00 PM at the Olde Mill Inn & Grain House Restaurant. Hope to see you there!

Wade's Development Board Report
05.11.2023

Recorded and submitted Minutes for Board Meeting held on Friday, March 24th, 2023

*Attended the Morris County Chamber of Commerce's New Member "Meet and Greet"

Attended major donor thank you lunch at The Morristown Club with Lynn Ross and Sally

*Attended major donor cultivation lunch with Charlie and Kathleen Apt and Sally at The Pluckemin Inn

*Lunch at The Morristown Club with major donor suspect Dr. Jim Muchmore

Had my 2022-2023 personal performance review with Sally

Breakfast with Morris County Chamber member Vince Egan/Branch Manager at Benjamin F. Edwards & Co. Investments. Vince referred the Barnes & Thornburg LLP law firm interested in a Volunteer Community Service Workday in our CMA. Held a ZOOM meeting with the contact to review details.

Secured and continued cultivation of many music festival sponsorships.

Attended staff orientation with new board members Lydia Chambers and Sue Kessel.

ZOOM Meeting with Carolyn Sharaway and Lynne in preparation for Development Committee Meeting on 04.19.2023.

*Attended Bernards Area Networking Group Meeting on 04.27.2023

*Viewed J.P. Morgan Chase Bank Webinar, "The Role of Philanthropy in Climate Action"

Assisted with the unloading and placement of 27,000 plants for the **Native Plant Sale**

Assisted with plant retrievals from variety of purchasers in nearby towns

*Viewed webinar "Maximizing your Event's Sponsorship Potential "

*Viewed NJ Environmental Fundraisers' presentation, "Asking for Major Gifts"

Meeting with Carolyn Dempsey at the Blue Foundry Bank in Chatham re. submitting a grant application and sponsorship for the music festival

Meeting with Adam Psychos/GLENMEDE Investment and Wealth Management and Sally re. Planned Giving presentation and general education re. qualified distributions. Solicited Adam to serve on the board.

*Viewed webinar, "Turn Your Board into a Lead Generating Machine."

Called major donors to thank for gifts received. Wrote and mailed acknowledgment letters.

Met with Sally to discuss the membership, Advisory Council, board and major donor budget for 2023-2024.

Attended Trusteeship Committee Meeting on 05.11.2023 and drafted Minutes.

Began preparations for GSWA presentation at the Morris County Chamber's **Business Connections** on 05.19.2023.

Very excited to report the generosity of board member Stacey Valentine and her fiance (soon to be husband!) Jude Avelino. Stacey and Jude are hosting cocktails and dinner to benefit GSWA at The Morristown Club on Thursday, June 1st, 2023. The club will be closed that evening for this private event to which Stacey and Jude have extended their personal mailing list of guests. This is a rare opportunity to meet and expose an entirely new group of interested prospects. In addition, in lieu of a gift, their wedding invitation listed three non-profit organizations to which a guest might send a contribution and the Great Swamp Watershed Association is one of them! We gratefully acknowledge this welcome and most thoughtful gesture from Stacey and Jude.

*Attendance at the in-person events enables me to broaden my circle of contacts and consider a cultivation/solicitation strategy for each individual or business depending on their circumstances. The webinars are a teaching tool with specific guidelines for enhancing different areas of fundraising.



GSWA members enjoy an amazing spring hike at the Great Swamp National Wildlife Refuge on a members only sunset hike May 10th.

Overview

The last two months have seen a hectic mix of educational programming of all types, including public programming, the bulk of our spring school field season, but primarily the lead up, preparation and running of our third annual native plants for pollinators sale, which has made for some creative staff planning to allow us to cover our obligations! Programs have taken place early morning, late at night, weekdays, and weekends, sometimes with multiple programs on the same day! Having two topographic models has helped with the logistics of covering multiple location in a single day, and our recently purchased equipment such as the spotting scope, expanded binoculars and water testing equipment and our kayak trailer have all been deployed to great effect over the last months. It is heartening to see high school students who get off a bus pretty closed to learning, get truly excited about using binoculars to see birds or other wildlife up close for the first time. Our CMA has cooperated, allowing a school group to watch a redtail hawk eating its prey through the scope, or a pileated woodpecker nesting as they prepared for their field trip, and tech savvy kids have figured out how to use their phones through scopes and binoculars to share their sightings! After an incredibly busy spring, we are learning that even with 4 staff and occasionally more available for programming, we cannot meet all demand, and must also have enough extra capacity to cover eventualities like sickness, or unexpected important opportunities that can't be passed up.



Gingers leads a native Tree hike in Essex Co.

We have offered a great diversity of public programs: from Sarah's successful new 'Eat the weeds', to our expanding range of Passaic River region hikes including Ramapo and Paterson's Rifle camp, along with perennial favourites such as the spring vernal pool program or kayaking programs. We've also partnered effectively with area libraries, with a mix of virtual and in-person programs offered with Harding's Kemmerer, Pequannock, and Long Hill library- (more on that below), and with community partners we have met through the plant sale such as Bernardsville and Madison Garden Clubs. Ginger led a native trees hike for the Essex Co. chapter of the Native Plant Society for more than 90 attendees, and we have presented to the Green Pond, Madison, Bernardsville, and Summit Garden clubs over the last weeks!

However, the main educational undertaking and time intensive program has been our native plant program, which we feel fits so squarely into GSWA's educational mission. Native plant gardens attract pollinators and conserve native biodiversity, adding pollination pathways between larger open space areas. Homeowners in our region have a great thirst for knowledge on the subject, as evidenced by the attendance of more than 700 participants at the four webinars offered as part of the plant for pollinators program and by the interest

and enthusiasm for the plant sale. We will have a full breakdown of the program metrics in the next report, but sold to more than 590 individuals 25,500 plants, which were processed by 75 plus eager volunteers, and distributed at 13 partner sites from Mendham at the source of the river to Montclair and South Orange at the lower Passaic. More on this below.

We continue to mentor future young environmental scientists through our internship program, and sometimes believe it will set us up for sainthood given the patience it can require! We had a semester long intern from William Paterson college, several mid/post college interns' home for the summer, a HS Girl Scout and HS senior completing their post AP exam senior independent project working with us this spring. Working with interns and young volunteers can be a little like herding cats- they are often scattered, have poor time management or underlying administrative skills and are often very last minute and abrupt in their communications. In essence they don't know what they don't know!



Sandra and I often spend considerable time schooling students on the soft skills they need to be effective as adults in the real world, job market or moving forward in their college process. Writing in college, where AI software can write your paper for you, does not produce what is needed writing effectively for external audiences in a busy non-profit, and many of our interns come to us with weak or "emerging" writing skills!

These soft skills- effective communication, demonstrating leadership, being proactive and thinking ahead and persistence, are often where we need to spend the most energy. An example might be a potential summer intern who sends a generic email, then doesn't follow up, but weeks later gets a parent to do it for them. We try and model good communication and expect it of our interns. When they show up late, don't complete the depth of research or pay attention to detail -we try and show them what will be required in the real world. Though education of these interns doesn't add much to our 'numbers of students taught', we feel that we potentially make a huge impact on interns understanding of what it means to work in the environmental field, (or not as some of our interns may learn this is not for them!) Some of our past interns – now past college or seeking summer field related internships, still come to us for references, and we are proud of the contribution we make to their learning, despite it being difficult to capture in metrics.

School K-12 Education

We continue to learn Spanish through Babel's intensive 1 to1 language program, though scheduling lessons has proved trickier during full days of programming. We have until 7/31 to complete our courses, which include 40 lessons and unlimited access to the learning platform. If you speak Spanish, talk to Ginger or Sarah in Spanish next time you see them- as previous speakers, they are progressing incredibly well! We know that increased fluency will help us with being more effective educators as we increasingly move downstream. Sandra and I as novices are gaining vocabulary and understanding... but are not ready to teach in Spanish just yet! The program is being reimbursed by Learning grants, and future grants for employee training will cover pesticide training, kayaking and interpretive skills and chainsaw training for staff.





We completed 7 of our scheduled 10 joint field programs with Students2Science. It continues to be both a rewarding and frustrating endeavor. Schools often arrive late, and with a drastically reduced numbers of students to what we were expecting. They may cancel at the last minute because of lack of students/teachers or bus costs, and we have talked to S2S to help improve this situation moving forward to allow us to deploy our staff and limited time most effectively. Students in our urban, underserved schools have missed multiple years of



science education, classroom learning skills experience and field trips through COVID. We have had multiple high school seniors tell us their last field trip was in 8th grade. This leads to a lack of understanding of behavior and engagement expectations in the field, exacerbated by the extreme teaching shortages many New Jersey schools are experiencing. Some of our biology students on a recent field trip have no teacher for any of their sciences and are expected to learn by themselves with online resources. These are the students that can most benefit from the kind of hands-on, high-quality science understanding we can convey- but they need to be present, both physically and mentally, to engage in learning. We continue to work with under-served communities, as we know that when we engage with them, we offer a lot of learning in a small amount of time, give them exposure to science careers they may not have considered and help build understanding of the link between book learning to real world environmental issues experienced in their own communities.

Flex school, a neurodivergent school for 6-12th graders visited for their field trip, giving us a chance to both teach and develop patience with a very different style of learner-students struggled with the mosquitos, heat, or other novel conditions, but we persevered and overall, the program was a success! We have been in class in PS28 in Paterson, Berkeley heights, Madison, Chatham and Millington and several other downstream schools, but primarily we have been out in the field each day and the spring weather has cooperated. We taught Governor Livingston HS students in class and in a huge group of walking field trip visitors to a program in Watchung Reservation. Next week we will spend the day at Paterson falls with 300 students demonstrating our water quality model, teaching about rivers as a spring migration flyway and teaching with macroinvertebrates, and our school programming will continue until late June.

Please have patience if you reach out during this busy field season out of office. We can always be reached by cell.

Public Programs

We have offered a huge range of programs over the last months-Sarah led an Eat the Weeds foraging program with 25 people all about foraging ethically, This was co-advertised with Kemmerer library in Harding. Attendees enjoyed onion grass crackers, nettle butter, garlic mustard pesto, pickled magnolia blossoms and knotweed sorbet for dessert! Offering programs jointly allows for new audiences to reach us and builds community partnerships which makes for solid bases from which to launch future collaborations. We partnered with Longhill library over the month of April to great effect. Staff offered several virtual programs that were advertised jointly, including a gardening for wildlife talk to coincide with the start of the plant sale, a water quality report card, American eels talk and a re-boot of our regional scavenger hunts that allow kids on spring break to get out and explore their communities by following clues to a variety of outside locations including the Environmental education center and Great Swamp Refuge amongst others. Our feedback from the scavenger hunt was encouraging, with several families new to the area using it to learn more about the Great



Swamp and beyond. We have also partnered with new partner Pequannock library for two talks: one to coincide with the plant sale which created several plant sales including one for over \$700 for their environmental commission, and one on environmental cleaning products that will take place this week. More than 35 participants ventured out on a chilly night at the end of March attending our annual Vernal Pool Program to learn about the seasonal habits of amphibians. Throughout the night we found wood frog eggs, green frog tadpoles, and heard spring peepers.

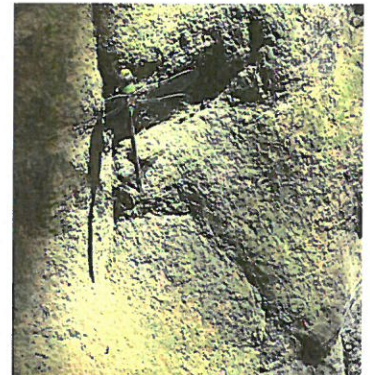


Ginger led a winter tree ID hike for the Native Plant Society Essex County Chapter in Brookdale Park, Montclair. The late March weather fell in our favor with a beautiful upper 60 degree and sunny day, causing over 90 attendees to come out to learn!



The hike happened because of our plant sale partnership with the Essex County Native plant society, and the Montclair and Maplewood site were huge purchasers during the plant sale. As we move downstream, we need to pull from downstream residents, not simply bring our original membership with us, and creating community links like this help us to be effective in reaching new audiences. The feedback from the hike was fabulous, with Ginger managing to lead such a large group incredibly well as she expertly identified and described a wide range of trees. We had a great hike at Rifle camp near Garrett

Mountain despite receiving 2" plus rain the day before. A great team building exercise to get everyone across the trails that had turned into rivers overnight. There was a really healthy population of green and bullfrogs at the lake, as well as a massive green darter dragonfly that remained still enough to photograph.



Our kickoff spring paddle went off without a hitch with kayakers ranging from experienced to total newbies. Everyone learned about the water quality and environmental stressors to the Passaic River and many of them were able to see a red headed woodpecker - an endangered woodpecker, up close using our well used binoculars! More paddles are on tap, however, to maintain our program staff sanity, we are trying to restrict the number of evening and weekend programs that occur, since we are also working weekdays with stewardship and programming, so we are not able to offer as many programs as would be able to run. We must also ensure that we have enough bandwidth to adequately promote to our audience every educational program we offer, in amongst the other GSWA wide communications about development or other events that must occur. We will offer light programming through the summer as we plan for a more effective process for event communication to the public for fall.



Plants for Pollinators Sale

The last orders have been delivered, the deer protective fencing removed, and the homemade cookies we supplied each day to our hardworking volunteers have all been eaten- Even the fire sale of remaining plants we had intentionally held back in case of eventualities can be released for sale later this week.

We can chalk our third plant for pollinators sale up as a huge success despite some website provider glitches at the start of the sale. It will take us a couple of weeks to parse through the expenses and incomes for a full financial report, however some of our metrics are already available, and the pictures below will



capture some of the flavour of this intense week of work to collect, process and deliver 25,000 native plants of 37 different species to more than 590 purchasers. We rented not one but two trucks in an epic day of driving, to collect our plant material, which was pulled, loaded, unloaded, and labelled in a 12-hour marathon day. This set us up for a great start to the processing week, and our plant for pollinator partners and GSWA stalwart volunteers provided close to 80 volunteers to sort and pick the orders. Despite difficult cool and wet conditions some days, and the additional hail and high winds, our plant volunteers were not deterred! As part of partnering with us for the sale, the partners commit to providing volunteers to staff both the processing of plants and the distribution at our 13 regional distribution sites. We could not do it without them and tried where possible to make the volunteer



experience also an educational one. We provided information of plant growth requirements, photos of the baby plants they were working with in bloom, and information for volunteers to grow their own knowledge as they helped out making this another successful year!

Some of our newest downstream partners- south Orange and Montclair were some of the largest orders. We also paid it forward with some native plants set aside for underserved school pollinator gardens. The plant sale committee will debrief over the coming weeks, and we will present the full fiscal and metrics report next month.



Overview

We have made progress on our spring stewardship tasks, with one highly effective and one small but mighty day of stewardship with Enbridge and Apple corp. The two workdays played up the importance of good communication in arranging these projects. Enbridge had a highly effective workday, with 18 attendees having all their own safety equipment, a great turnout, and a good team leader from the company. This allowed a super effective day where lumber was delivered, sawn, carried out and constructed into boardwalk ½ mile out on the trail, and 1/3 of a mile was chipped and edged. Everyone left feeling good about the day, and we



gained new volunteers and attendees at future programs because of the great working relationship we had with Steve Woodruff, our Enbridge contact. In contrast, our three half day Apple workdays ended up being cancelled or attended by 2 and 5 volunteers- a group that is effectively too small to get a substantial amount accomplished. This was our first time working with Apple, and we only learned on the workday that they are encouraging employees to volunteer on their own time, and paying the nonprofit organization when they do, rather than giving them company time to volunteer. This is an important distinction and makes a huge difference to the tenor of the day and its outcome.

Our Friday volunteer crew have spent countless hours at the trails over our mild winter and spring. They even switched tasks to help us with unloading and processing the plants from the sale to lend a hand. We cannot sign the praises highly enough of these reliable weekly volunteers. from our internal volunteer crew. Now that the plant sale is finished, we will have several large corporate groups over the coming weeks, including Goldman Sachs and Wells Fargo, along with Columbia Bank and several High School community service programs. This will allow us to focus on several major projects.

1. We will replace the temporary 'bog' boardwalk erected hurriedly during covid and in the wake of the restoration making our trail system wetter with wider raised permanent boardwalk.
2. We will enhance several of the newly created vernal pools completed during our restoration with plants and bird houses, trails that run close by them and benches to enable hikers to rest and enjoy them.
3. We will conduct several chain saw days over the coming weeks to create edging for the trail system from larger fallen material and allow trees to be removed that pose a liability to the trails or infrastructure using professional tree services. Dead and dying ash trees, and other species killed by the higher water levels now present at the site close to trails are the most pressing to remove.
4. We will complete the new trail and boardwalk across the Lamorgese section of the property, adding an important loop and access to an underutilized section of the trail system.

5. Undertake substantial invasive species removal there this season,
6. Bolstering and creating additional teaching areas throughout the site.

Corporate workdays



As mentioned above, we have Columbia Bank 5/19 Goldman Sachs 6/2 and 6/29 and Wells Fargo 6/15 along with Madison High school on 5/25. If you would like to come out and help at any of these days we would love and appreciate hands-on help. Let Hazel 908 477 4578 or Ginger gvanryzin@greatswamp.org know. Come to get dirty, sweat and not need to use the gym that day! Wells Fargo and Goldman Sachs along with Columbia bank are underwriting their workdays , allowing us

to pay for the lumber and plants we will install, and cover the cost of the rental toilet we use at the site all season long.

We would appreciate any board help to connect us with other potential funding or volunteer sources for our corporate workday program. We have FAQ and informational documents prepared to hand off to potential corporate partners and would just need an email or phone introduction to the correct person at the potential partner company and can take it from there. If you have any links or helpful suggestions for potential partners, please reach out to Hazel at hazele@greatswamp.org

Deer Management Program

Hunting season has closed and will not reopen until September 2023. We are GPS mapping the location of the various hunting stands at the property to enable us to monitor which are being used and remove those that are no longer in use. We are also in conversation with the hunters to provide a workday of



service during the growing season, to have them give back to the organization. 7 deer were harvested in and around the property this year.

Our trails are now open daily from dawn to dusk with no hunting restrictions in place until September 2023.

Except for this garter snake, caught hunting and catching a green frog on our trail system this spring!

Easement and Fee Properties

We are moving forward with a possible 2.3-acre parcel donation from Jim Weichert along Woodland Road in Harding. We visited the site with staff and trustees and understand that the refuge is interested in adding it eventually to its land holdings. The house and land with the recently donated easement donated to GSWA by Anthony Sblendorio is for sale, and we will ensure that any new owner understands both the restrictions and the ramifications of noncompliance with that easement. As yet the property has not closed but is listed for sale.



LTA Accreditation

The Land Trust Alliance Accreditation board (LTA) flagged our re-certification application for concerns of possible illegal personal gain for Mr. Lamorgese regarding the LaMorgese Acquisition back in 2017. We have made progress in working with both LTA accreditation staff and our LTA regional rep to gain understanding specifically of how to proceed. We are working with an area land

use and nonprofit attorney to ensure we comply with and fully understand exactly what we did/didn't do during this transaction that caused the LTA concern. A retrospective analysis will go before the board at the next board meeting as all must sign off on the new policy, we will create to ensure future compliance and to build understanding of any possible implications of the flagged transaction.

Trails at the CMA

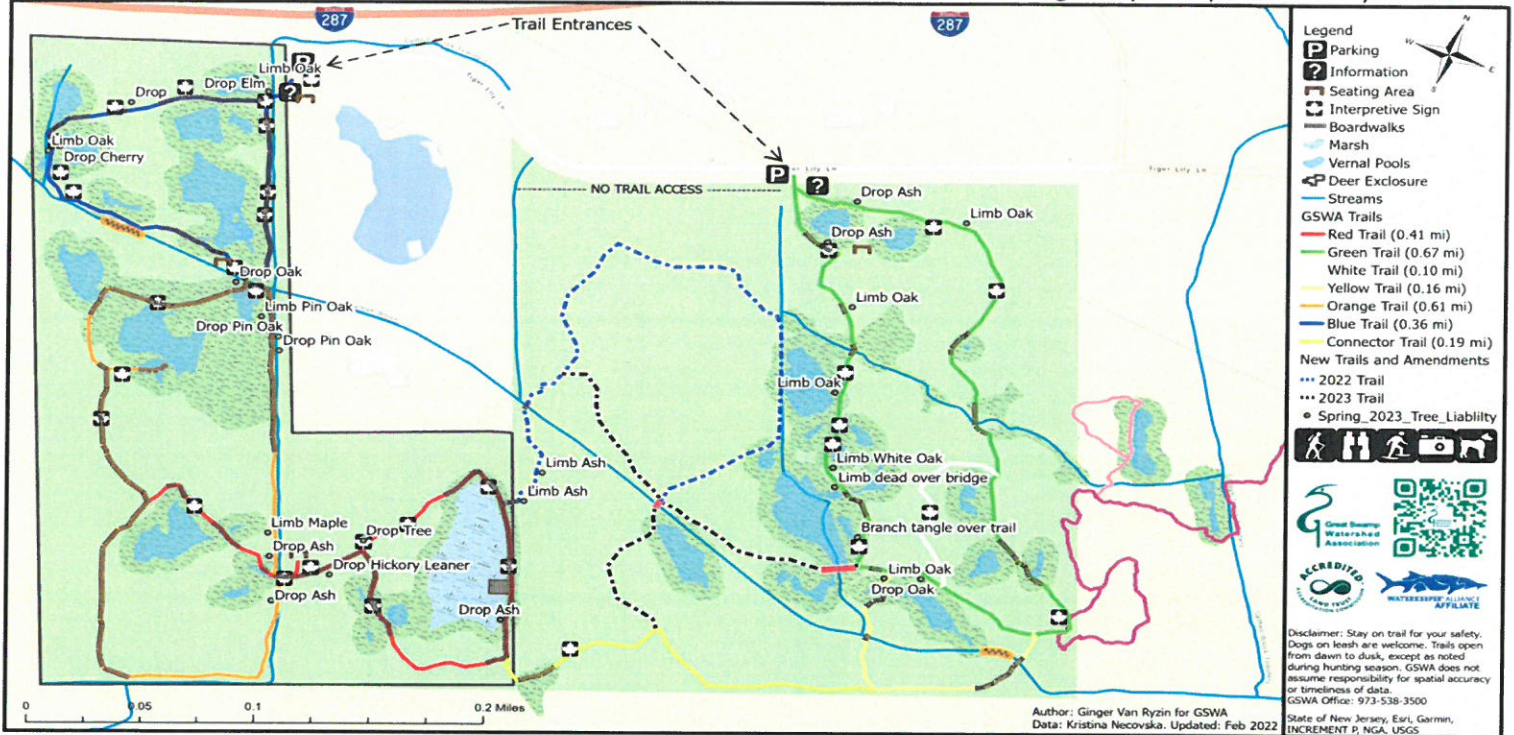
Please see our updated map which highlights some of the new and additional changes we have made to the trails over the past months. Our interns recently GPS located more than 65 bird houses of all types around the trail system to allow us to better take care of them. We occasionally receive boxes or donated bird houses from our supporters, and this will allow us to better plan for their ongoing maintenance and repair. Geoff Peters donated and helped install two beautiful, handcrafted screech owl boxes out around our trail system and has offered to help take care of them and others moving forward. We appreciate these volunteers' generosity, and the new map will be put to immediate use!!



If you would ever like to take a walk around the property with one of our staff to get to know what we do there, please let us know, we are always happy to show off the work that we have done.

Great Swamp Watershed Association

Conservation Management Area -
Tiger Lily Lane, Morristown, NJ 07960



Legend

- Parking
- Information
- Seating Area
- Interpretive Sign
- Boardwalks
- Marsh
- Vernal Pools
- Deer Enclosure
- Streams

GSWA Trails

- Red Trail (0.41 mi)
- Green Trail (0.67 mi)
- White Trail (0.10 mi)
- Yellow Trail (0.16 mi)
- Orange Trail (0.61 mi)
- Blue Trail (0.36 mi)
- Connector Trail (0.19 mi)

New Trails and Amendments

- 2022 Trail
- 2023 Trail
- Spring_2023_Tree_Liability

Disclaimer: Stay on trail for your safety. Dogs on leash are welcome. Trails open from dawn to dusk, except as noted during hunting season. GSWA does not assume responsibility for spatial accuracy or timeliness of data.
GSWA Office: 973-538-3500
State of New Jersey, Esri, Garmin, INCREMENT P, NGA, USGS

Office Manager and Event Coordinator Board Report for May 19

Melanie Hertgen

As office manager and event coordinator, I have had the opportunity to work on a variety of projects over the last couple of months.

I assisted in designing the gala invite – drafting the New Jersey environmental leaders’/Governor Murphy version + a tribute to former Advisory Council Jay Delaney, where I researched some of the climate initiatives that the state government has been implementing, as well as Jay DeLaney’s contributions to GSWA. I also designed some upcoming event flyers and am working on the advisory council invite.

I participated in a few educational programs where I observed the education team lead school hikes in our CMA, and their water cycle presentation using the enviroscape simulation. I recently did my first educational presentation along with Tommy (GSWA intern) for 2nd graders about bird migration which went great. Hopefully I can partake in more education programs in the future.

I have been helping with the upcoming music festival by reaching out to food vendors and asking if they want to participate in the festival, and by sending gift card asks to nearby grocery stores to help feeding our volunteers at the event. We have received \$100 in total from stores and hope to receive more within the next month. To promote the event, I am adding the music fest info to electronic calendars on various sites and will soon be sharing it to community facebook groups (each with 5k+ members) which will hopefully increase attendance.

Another event that I have been helping to organize is the advisory council dinner at the Olde Mill Inn on June 13th.

The final ongoing project that I have been working on is designing the new GSWA pamphlet. We have discussed this with Board and Advisory Council members about some new ideas, and we were given great advice to make our designs more appealing to the public. I am researching some “fun” facts and useful tips people can use from their home to keep our waters clean (e.g. take toxic household chemicals to a waste center instead of pouring it down the toilet, etc.). This way people will feel more inclined to keep our pamphlet for future use instead of throwing it right away.

Board Report: Membership and social media

Nancy Rago, May 11, 2023

As part of my Membership Tasks, I supported the Education and Stewardship team with the Plant Sale Program's final webinar as well as for the Plant Sale online ordering, reporting of product inventory throughout the sale, invoicing from purchasers, and Factory Day data needs for order fulfillment and Partner Pickup locations. For the Earth Day Appeal, I generated a mailing list of 1732 donors who gave within a 14-month period and Board and Advisory members. Plant Sale and Earth Day Appeal giving is still being inputted but to date the Gift Frequency Analysis from 03/16/2023 to 05/11/2023 shows 452 gifts entered with 82.96% (375) of Donor giving 01 Gifts, 12.83% (58) 02 Gifts, 3.54 % (16) 03 Gifts, 0.44% (2) gave 04 Gifts, and 0.22 % (1) giving 05 Gifts. My Board Adoptee meetings with Reed Auerbach happened on March 30th via Microsoft Meetings and Marilyn Dee on March 22nd with a lovely Garden Tour of the Dee's native plantings. To further my Excel skills, I am taking a refresher CCM Business Training course on Pivot Tables & Beyond.

Membership FY2023 Q4 - 04/01/2023 to 06/30/2023

- Q4 Member Count and Individual Giving Spreadsheets (See pages 3 & 4)
- Q1 2024 Member Mailings will consist of monthly mailed reminders of upcoming renewals and a final reminder to lapsed member mailings between 07/01/2023 to 09/30/2023.
- Note: Plant Sale and Earth Day Appeal giving still being inputted.

Social Media as of 05/11/23:

- Audience Analytics – Audience growth and Demographics (3/16/2023 to 5/11/2023):
 - Facebook.com/GreatSwamp: 3,883 followers (+1.02%/52 of new followers).
 - Instagram.com/greatswampnj: 2,822 followers (+1%/83 new followers)
 - Twitter.com/greatswampnj: 2,364 Followers (-1%/11 less Followers). Note: Twitter platform continues to purge fake followers causing decrease in growth.
 - LinkedIn.com/company/great-swamp-watershed-association: 248 Followers (+5.5%/14 new Followers).
 - Gender: Women 67%, Men 33%. (Remains the same)
 - Top Five Cities: Chatham, Morristown, Madison, New York, NY, Basking Ridge. (Remains the same)
- Content Analytics – Top Three Content that yielded the best reach, like and replies:
 - What is that buzzing stripey thing? 🌻 It's springtime so ... (May 3, 2023, 4:00 PM Facebook Post)
 - Great work! Plant Sale Volunteers, thank you! (May 4, 2023, at 7:09 PM Instagram Story)
 - Music Festival 2023 (May 8, 2023, at 4:40 PM Instagram Story)
- Looking Ahead to Social Media Post Content:
 - ONGOING POSTS
 - Sustainable Sunday, Water Wednesday, Charity Navigator/GuideStar, Volunteer, PayPal Giving Fund
 - MAY POSTS
 - May 19 - Endangered Species Day
 - May 20 - World Bee Day
 - May 22 - International Day for Biological Diversity
 - May 23 - World Turtle Day
 - May 29 - Learn About Composting Day
 - JUNE POSTS
 - Tag Your Native Plant
 - June is National Pollinators Month

- June 3 - National Trails Day
- June 5 - World Environment Day
- June 6 - National Higher Education Day
- June 13 - National Weed Your Garden Day
- June 15 - Nature Photography Day
- June 19 - 25 - National Pollinator Week
- June 20 - Summer Solstice - First Day of Summer
- JULY POSTS
 - Jul 4 - Independence Day
 - Jul 14 - Get to Know Your Customers Day
 - Jul 16 - World Snake Day
 - July 22-31 - National Moth Week

Website Analytics, Updated to GA4 Reporting – Date Range 3/16/2023 to 5/11/2023.

- Acquisition Overview Report

Analytics GSWA <http://www.greatswamp.org> Go to report

All Users Add comparison +

Custom Mar 16 - May 11, 2023

- Acquisition Overview

Users that came to greatswamp.org. Previous report 8.7 K Users. (+5% in Users. NOTE: Increase activity can be Plant Sale activity. Note spike in below line graphic on 02 Apr)

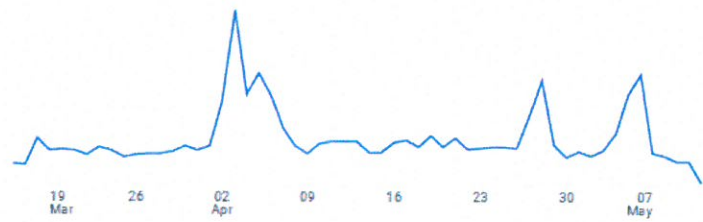
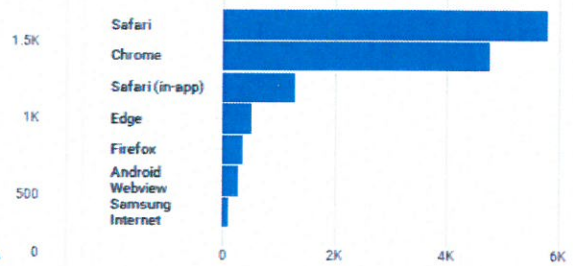
Users **13K**

New users **13K**

Average engagement time **2m 52s**

Total revenue **\$0.00**

Users by Browser



Native Plant Catalog 18K Views
Native Plant Home Page 14K Views

Users by Platform / device category

PLATFORM / DEVICE CAT...	USERS
web / mobile	7.7K
web / desktop	5K
web / tablet	355
web / smart tv	1

[View platform devices](#)

New users by First user default channel group

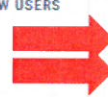
FIRST USER DEFAULT CH...	NEW USERS
Direct	1.8K
Organic Search	1.1K
Organic Social	1
Referral	
Email	

[View user acquisition: first user default chann...](#)

Views by Page title and screen class

PAGE TITLE AND SCREE...	VIEWS
2023 Native PL... Catalog - GSWA	18K
2023 Native Pla...rd-28th - GSWA	14K
Individual Spe...chives - GSWA	9.7K
Garden Kits Archives - GSWA	9.2K
Great Swamp Wa... than 35 years	6.6K
Individual Spec... 2 of 3 - GSWA	5K
Cart - GSWA	4.5K

[View pages and screens: page title and scree...](#)



**Great Swamp Watershed Association
Member Count Fiscal Year by Quarters***

	30-Sep	31-Dec	31-Mar	30-Jun
FY Ending	Q-1	Q-2	Q-3	Q-4
2023	1987	2073	2082	2110**
2022	1999	2017	2000	2081
2021	1370	1350	1413	1916
2020	1547	1487	1421	1389
2019	1639	1633	1599	1585
2018	1687	1726	1659	1673
2017	1767	1734	1738	1778
2016	1686	1783	1732	1792
2015	1668	1727	1664	1771
2014	1514	1561	1500	1682
2013	1543	1578	1446	1481

* Count Records based on all donors who have given in the 14 months prior to the end of the quarter.

**Q4 numbers as of 5/11/23.

C:\Users\nrrego\Documents\GSWA\Board Reports\Board Report 2023 05\FY2023 Q4 Member Count.xlsx\Member Count

**Great Swamp Watershed Association
Individual Giving (GL: General Member + Major Donor + Trustee Giving)**

Quarter Ended	New	No. Donors	No. Gifts	Renew (Plus SM, VOT)	No. Donors	No. Gifts	Appeal	No. Donors	No. Gifts	Donation	No. Donors	No. Gifts	Total General Membership	Major Gifts	No. Donors	No. Gifts	Trustee Giving**	No. Donors	No. Gifts	Total Membership	
FY 2023																					
Q4	372	10	10	5,430	75	75	360	7	7	248	15	15	6,409	3,500	4	4	155	1	1	10,064	
Q3	1,307	24	24	7,422	115	131	160	4	4	1,643	35	38	10,532	60,133	10	11	2,064	3	6	17,729	
Q2	2,485	30	30	23,263	263	289	6,684	64	64	3,000	35	35	35,431	85,901	55	57	16,137	9	7	137,469	
Q1	694	12	12	12,369	162	181	3,095	13	13	725	12	12	16,883	31,628	14	14	7,135	8	13	55,646	
Total	4,486	66	66	43,054	540	601	9,939	81	81	5,368	82	85	52,314	177,662	79	82	25,335	20	26	193,115	
FY 2022																					
Q4	893	21	21	8,013	92	117	3,782	52	52	3,816	76	78	16,504	28,560	21	22	5,120	12	20	50,183	
Q3	1,843	41	41	11,577	107	132	94	3	3	4,090	72	80	17,604	76,780	15	16	625	4	6	95,008	
Q2	1,289	20	20	22,544	224	250	4,903	52	53	3,340	35	36	32,075	71,365	51	56	15,048	12	19	118,488	
Q1	492	9	9	6,164	77	92	4,850	56	56	2,027	16	16	13,533	35,330	19	19	11,090	5	13	59,953	
Total	4,516	91	91	48,298	500	591	13,628	163	164	13,273	199	210	79,716	212,035	106	113	31,882	33	58	323,633	
FY 2021																					
Q4	1,909	32	32	14,163	175	187	4,180	48	48	2,349	70	72	22,601	35,365	23	23	14,111	12	21	72,077	
Q3	2,200	45	45	12,708	155	168	426	6	6	3,027	45	48	18,361	93,240	26	28	13,745	17	30	125,345	
Q2	2,168	24	24	20,829	217	234	5,387	66	66	2,404	22	22	30,788	64,083	51	53	8,841	9	14	103,712	
Q1	1,247	14	14	8,968	105	116	1,050	12	12	883	21	21	12,148	26,000	17	17	621	3	5	38,769	
Total	7,523	115	115	56,668	652	705	11,043	132	132	8,664	158	163	83,898	218,688	117	121	37,317	41	70	339,903	
FY 2020																					
Q4	309	7	7	16,615	201	209	6,939	82	82	122	7	7	23,984	29,500	18	19	19,370	18	26	72,854	
Q3	957	22	22	10,324	137	148	250	2	2	16	17	17	11,531	66,015	12	12	6,786	9	13	84,332	
Q2	2,130	30	30	18,535	218	231	6,025	72	73	1,365	15	16	28,055	73,400	45	46	2,450	3	5	103,905	
Q1	745	15	16	8,356	94	103	1,097	16	16	1,268	22	22	11,466	25,500	10	11	1,150	4	6	38,116	
Total	4,140	74	75	53,831	650	691	14,311	172	173	2,755	60	62	75,037	194,415	85	88	29,756	34	50	299,207	
FY 2019																					
Q4	1,135	17	17	14,157	185	200	5,190	82	84	253	12	12	20,735	48,281	31	31	22,225	11	14	91,240	
Q3	2,140	31	31	10,545	132	147	-	0	0	442	9	10	13,127	68,500	15	15	2,650	5	7	84,277	
Q2	2,370	30	30	20,080	230	239	6,250	89	89	3,188	16	19	31,888	61,150	39	41	1,875	3	5	94,913	
Q1	880	15	15	7,020	90	102	1,210	16	16	1,001	13	15	10,111	7,002	11	11	1,425	3	5	18,538	
Total	6,525	93	93	51,802	637	688	12,650	187	189	4,884	50	56	75,861	184,933	96	98	28,175	22	31	288,968	

Notes: Donors may appear in multiple columns if they've given in different quarters and for multiple purposes.
*Renew plus Sustaining Members and Workplace Matching Gift
**Does not include Music Fest & Gala Giving.

†Q4 numbers as of 5/11/23. Plant Sale and Earth Day Appeal giving still being inputted.

C:\Users\jveng\Documents\GSWA\Board Reports\Board Report 2023 05\FY2023 Q4 Individual Giving.xlsx\Individual Giving

GSWA Water Quality Programs

Board Meeting Report

May 9, 2023

Water Quality Monitoring

2023 –

Chemistry -

After many delays due to electronics availability and shipping, we have finally acquired all the parts for our new YSI meter. This meter allows us to collect essential data in the stream at the time of sampling. Thanks to our grant from Hyde and Watson, acquiring this second meter means that we will be able to send out two teams at a time to collect our quarterly chemistry data as well as other discrete sampling events throughout the year. In terms of data collection, this is invaluable as we continue to expand our sampling range further downstream along the Passaic. Traditionally GSWA sampled over two days collecting at our four tributary streams in the Great Swamp watershed one day and along the Passaic headwaters the other. As we began to expand our data collection downstream we expanded that to three days and as of this year, with our newest expansion, we have had to increase it to four. When we were restricted to one YSI meter sometimes, due to weather events or other complications, we could potentially end up sampling over two weeks with some data being separated by seven to ten days and potentially a rain event. This makes looking at the data comparatively difficult. SO we are very pleased to be able to add this new meter to our tool kit.

Our 2022 Watershed Report Card presentation has been postponed. However, the presentation slides and the formal written report will be available on our website soon. I have included the PDF of the slides here as well. Please feel free to reach out if you have any questions.

If you were unable to join us for our presentation of our PFAS data you can see the recording of the presentation here: <https://youtu.be/UZ3RV8Pcmx4>

Visual Assessments -

For 2023, our visual assessment data for the spring will be collected between April 1st and May 31st. We have many new assessment teams that will be working on historic sites that needed new Stream Team members to take over as well as new downstream sites that will help us gain a better understanding of what is happening in our new expanded region.

We had a very successful Spring Stream Assessment Training on April 1st at the Long Hill Library with twenty-three people in attendance. Of the twenty-three we have brought in four new teams of volunteers who have already submitted new visual assessment data and are hoping to hear from three other teams who were interested in selecting an assessment site.

Bacterial Monitoring –

As we move into late spring and early summer we are getting ready to conduct our annual bacteria monitoring project. Through this yearly project, GSWA collects data on potentially harmful bacteria

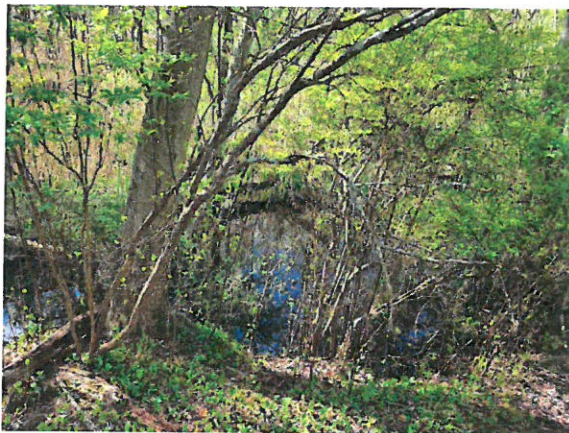
present in the surface waters of our area. These bacteria, *E. coli*, are most commonly introduced into our waterways through fecal matter from pet waste that isn't properly cleaned up, leaking sewage from septic or sewage pipes, or from wildlife. One common issue is Canada geese who prefer open lawn adjacent to water bodies. Their fecal matter accumulates in the area and when it rains gets carried into the nearby stream or lake. Once present in the water body, the bacteria can quickly multiply to unsafe levels, especially in areas where there is a high nutrient level present. We use our data to alert local communities of any areas of concern.

Bacterial sampling occurs over a five-week period with samples being collected weekly on Tuesday mornings. This year we will be sampling will take place from July 11th and run through August 8th. We are always in need of volunteers. Collecting samples is a fun, quick and easy way to help us gather important data. Many of our volunteers collect their samples before work. If you are interested in learning more about volunteering for this important project please reach out to sandral@greatswamp.org

Macroinvertebrate sampling –

Our annual macroinvertebrate sampling is scheduled for the weeks of June 12th and 19th. We will narrow the dates as we get closer and see what the weather has in store for us. Macroinvertebrate data helps GSWA to analyze the long-term health of or river ecosystems. If you are interested in learning more about volunteering for this important project, please reach out to sandral@greatswamp.org

PFAS –



We will be conducting follow-up sampling for PFAS in the upcoming months. After reviewing our initial results two locations stood out and require more data to help make determinations on PFAS source and the severity of the contamination. We will be looking at a number of sites along Black Brook both upstream and downstream of the Rolling Knolls Superfund site. Earlier this month I was able to get access to some of the more remote areas within the Rolling Knolls site that's to Sally Rubin and George Molnar from Fish and Wildlife. We hope that this data will be able to shed more light on the pollutants present on site as well as

how they are impacting the surrounding ecosystem and Black Brook. In Loantaka, elevated PFAS levels in the sites we initially sampled have led us to choose further locations to help determine if we can find a source for the contamination.

Education

Our spring educational programming is in full swing and we have hosted many schools at the CMA as well as further abroad. We have also begun our monthly Passaic River paddles in our kayaks and have had some great successful events introducing local community members to the beauty of the Passaic River.

We also teamed up with Long Hill Library to co-host a local scavenger hunt for library members over the school spring break period. We kicked off the event with some fun activities, we had our new topographic watershed model and everyone enjoyed learning about the history and flow of river through the region. We also had some live macroinvertebrates as well as a popular vertebrate to show participants and help them learn about the importance of protecting their water resources.



Northeast Waterkeeper Conference –

Earlier this week I was pleased to be able to attend the Northeast Waterkeeper Conference and represent GSWA Passaic River Waterkeeper Affiliate. The conference was hosted by the Nantucket Bay Waterkeepers and held in Cape Cod and Nantucket. The topics focused on HAB's (harmful algal blooms) and PFAS and were very relevant to issues GSWA and other waterkeepers are looking at. Information about new methodologies for measuring and monitoring HABs and their potential for toxicity in the water and air were discussed and we were able to go out in the field and observe many of the sampling sites.

The group presenting on PFAS is working with the University of Massachusetts to help develop simple and affordable tests for PFAS so that everyone can assess their risks at home from drinking water. These tests will look at overall fluorine, which is a component of all PFAS instead of looking at individual compounds. This new way of both thinking about the issue and testing for it will make it easier for underserved communities, where the likelihood of contamination is higher, to be able to afford to determine if they are at risk or not. One of the issues with PFAS as a group is that there are over thirteen thousand different potential compounds to sample for. This is also what currently makes collecting this data so very expensive. GSWA ran a recommended panel of 36 compounds with our testing. These compounds are the most likely to be found in elevated levels. However, with this type of science, you will not find what you are not looking for, or more simply put, if we didn't test for it we couldn't have found it. With this new method, you would get an idea of how much overall PFAS was in your water and could then follow up with the same sample (potentially) to determine which ones. PFAS in all of its forms has the potential to be carcinogenic so these are important issues and research topics.